

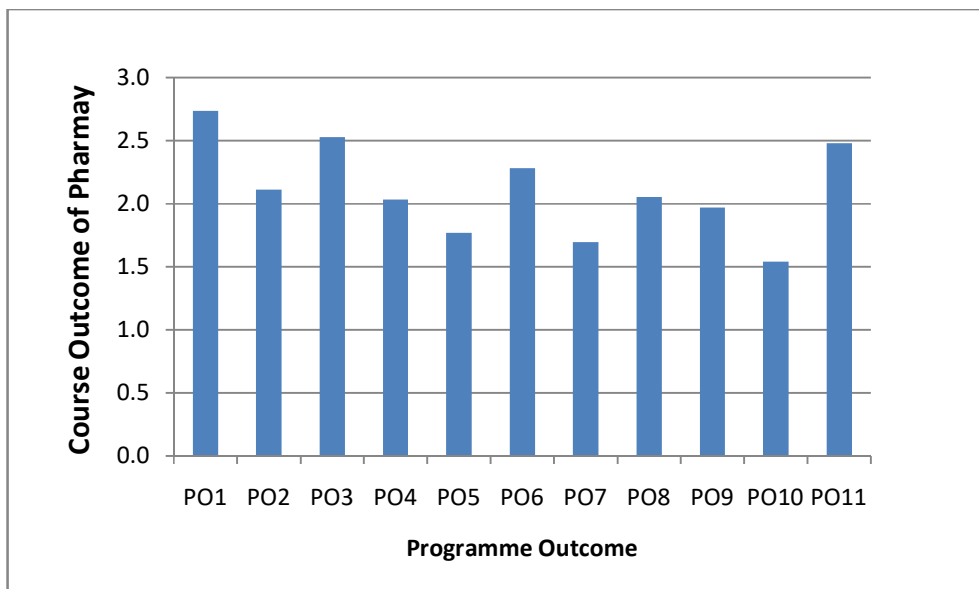
Course - PO matrix of courses for all four years of study

Courses	PO->	PO1	PO2	PO3	PO4	PO5	PO6	PO7	PO8	PO9	PO10	PO11
Human Anatomy & Physiology I (PY1Y109)		2.6	1.8	1.8	1.8	1.4	3	1.4	2	2	1.2	2.4
Pharmaceutical Analysis I (PY1Y110)		3	2.2	3	2	1.4	1.4	3	1.8	2.2	1.8	3
Pharmaceutics I (PY1Y111)		2.2	2.6	2.4	1.8	1.6	2	2.6	1.8	2.2	2.6	2
Pharmaceutical Inorganic Chemistry (PY1Y112)		3	1	3	1	1.6	2.8	2.8	2	1.8	1	1.8
Communication skills (HU1Y005)		1.4	2.6	2.8	0	3	2.2	1	3	1.6	1	2.6
Remedial Biology (PY1Y006)		1.6	1.2	1.2	0.6	0.4	1	1	1	1	1	1
Remedial Mathematics (MA1Y007)		1.6	2.4	2.6	1	1.6	1	0	1.6	1.8	0	2.8
Human Anatomy and Physiology II (PY1Y610)		3	1.8	1.8	2	1.8	2.6	1	2	2.2	1.2	2.2
Pharmaceutical Organic Chemistry I (PY1Y611)		3.0	1.4	2.6	1.6	0.2	2.2	1.2	2.0	3.0	1.0	2.0
Biochemistry (PY1Y613)		3	2	3	1	1.6	1.6	3	1.8	2	1.8	2.8
Pathophysiology (PY1Y612)		3	1.2	2.4	2.6	1.6	2.2	2.4	2.4	1	-	2.4
Computer Applications in Pharmacy (CT1Y503)		2.4	2.8	2.6	2.8	2.6	2	1.6	3	1.8	0.4	2.6
Environmental Sciences (PY1Y504)		3	2.2	1.4	0.2	2	3	3	2.2	3	3	3
Pharmaceutical Org. Chemistry II (PY2Y015)		2	2.4	2.8	2.6	3	3	1.6	3	3	3	3
Physical Pharmaceutics I (PY2Y014)		2.8	1.4	2.8	2	1	0.8	0.6	1	0.8	1.8	2
Pharmaceutical Microbiology (PY2Y013)		2.8	2.6	2.8	2	1.4	3	3	2	3	0.8	1.8
Pharmaceutical Engineering (PY2Y012)		3	3	3	3	2.2	2.4	1.3	1.6	1.6	1.8	2.0
Pharmaceutical Org. Chemistry-III (PY2Y629)		2	2.4	2.8	2.6	3	3	2	3	3	3	3
Medicinal Chemistry – I (PY2Y627)		3.0	1.0	2.8	2.4	0.6	3.0	2.0	1.8	1.2	1.4	1
Physical Pharmaceutics-II (PY2Y620)		3	2.8	2.8	2.8	2.4	2.8	0.8	2.0	1.4	1.6	2.4
Pharmacology-I (PY2Y628)		3	1.8	2.6	2	1.2	2	1.8	2	2	1.6	2
Pharmacognosy & Phytochemistry-I (PY2Y621)		2.8	2.2	2	2	0	1	0	1.4	1.6	2.6	3
Medicinal Chemistry–II (PY3Y016)		3	1.6	2.4	2	2.4	3	2.4	2	2	1.4	2
Industrial Pharmacy- I (PY3Y017)		3	2.6	2.4	2.8	2.2	2.8	1.8	1.2	2.2	1.6	2.8
Pharmacology-II (PY3Y020)		3	0	1.4	2.6	0	1.6	0	2.4	0	2	3
Pharmacognosy & Phytochemistry II (PY3Y009)		2.8	0	2.5	3	0	1.5	0	1	2	1	2.4
Pharmaceutical Jurisprudence (PY3Y008)		3	2.8	2.8	2.8	2.4	2.8	0.8	2.0	1.4	1.6	2.4
MEDICINAL CHEMISTRY–III (PY3Y517)		2.2	1.8	3	1.2	2	2.8	2.8	2.2	1.8	1.2	2.8
Pharmacology-III (PY3Y518)		3	0	2.5	2.6	0	1.6	0	2.4	0	2	3
Herbal Drug Technology (PY3Y519)		2.5	1.5	2	2.5	0	1.5	2	0	3	0	2.5
Biopharm. & Pharmacokinetics (PY3Y520)		3	2.4	2.2	1.6	1	2.4	2.6	2.4	2.4	2	2.4
Pharmaceutical Biotechnology (PY3Y521)		3	1.8	1.2	1.8	0.4	1.4	0.4	0.6	1	1	3
Quality Assurance (PY3Y542)		3	1.8	2.6	2.4	2.4	2	2.6	2.2	2.4	0.8	2.6
Instrumental Methods of Analysis (PY4Y021)		3	3	3	3	3	3	3	3	3	3	3
Industrial Pharmacy II (PY4Y022)		2.8	2.8	2.8	2	3	2.8	2	2.4	1.8	0.6	2.6
Pharmacy Practice (PY4Y023)		3	3	3	2.2	3	3	3	3	3	3	3
Novel Drug Delivery System (PY4Y024)		3	3	2.8	2.6	2.6	2.4	1.4	2	1.8	1.8	2.8
Practice School (PY4Y483)		3	3	2.4	0.4	3	3	3	3	3	0.6	2.6
Biostatistics and Research Methodology (PY4Y521)		1.6	1.8	2.2	2.2	1.6	2	1.6	1.8	2.2	2.6	2.8
Social and Preventive Pharmacy (PY4Y522)		3	2.8	2.8	2.8	2.4	2.8	0.8	2.0	1.4	1.6	2.4
Pharmacovigilance (PY4Y607 / PY4Y713)		3	3	3	2.6	2.2	2.2	2.2	3	2.4	2.4	2.8
Dietary Supplements and Nutraceuticals (PY4Y702)		3	2.8	2.8	2.8	2.4	2.8	0.8	2.0	1.4	1.6	2.4
Pharma Marketing Management (Elective) (MB4Y612 / MB4Y717)		3	3	3	1.4	3	2.4	2.8	3	3	1.4	2.8
Pharmaceutical Regulatory Science (Elective) (PY4Y606/ PY4Y708)		3	3	3	1.6	2.6	3	1.8	2.6	2.4	1.2	2.2
Pharmaceutical Product Development (Elective) (PY4Y615/ PY4Y716)		3	2.8	3	2.8	2.4	2	1.4	1.8	1.8	1.4	2.6

Attainment of PO	2.7	2.1	2.5	2.0	1.8	2.3	1.7	2.1	2.0	1.5	2.5
------------------	-----	-----	-----	-----	-----	-----	-----	-----	-----	-----	-----

Correlation levels 1, 2 or 3 as defined below:

- 1: Slight (Low)
- 2: Moderate (Medium)
- 3: Substantial (High)



Attainment of PO

The attainment of programme objective by the course objective shows that all the programme objective is been achieved by the courses taught in all the four years to the student. Maximum level is covered by PO 1, 3, 6, and 11 (pharmacy knowledge, problem analysis, professional identity and life-long learning) and lowest is PO 10 (The environment and sustainability). A large number of POs are covered by laboratory components. The institute campaigns and organizes several events to match the PO 10 .