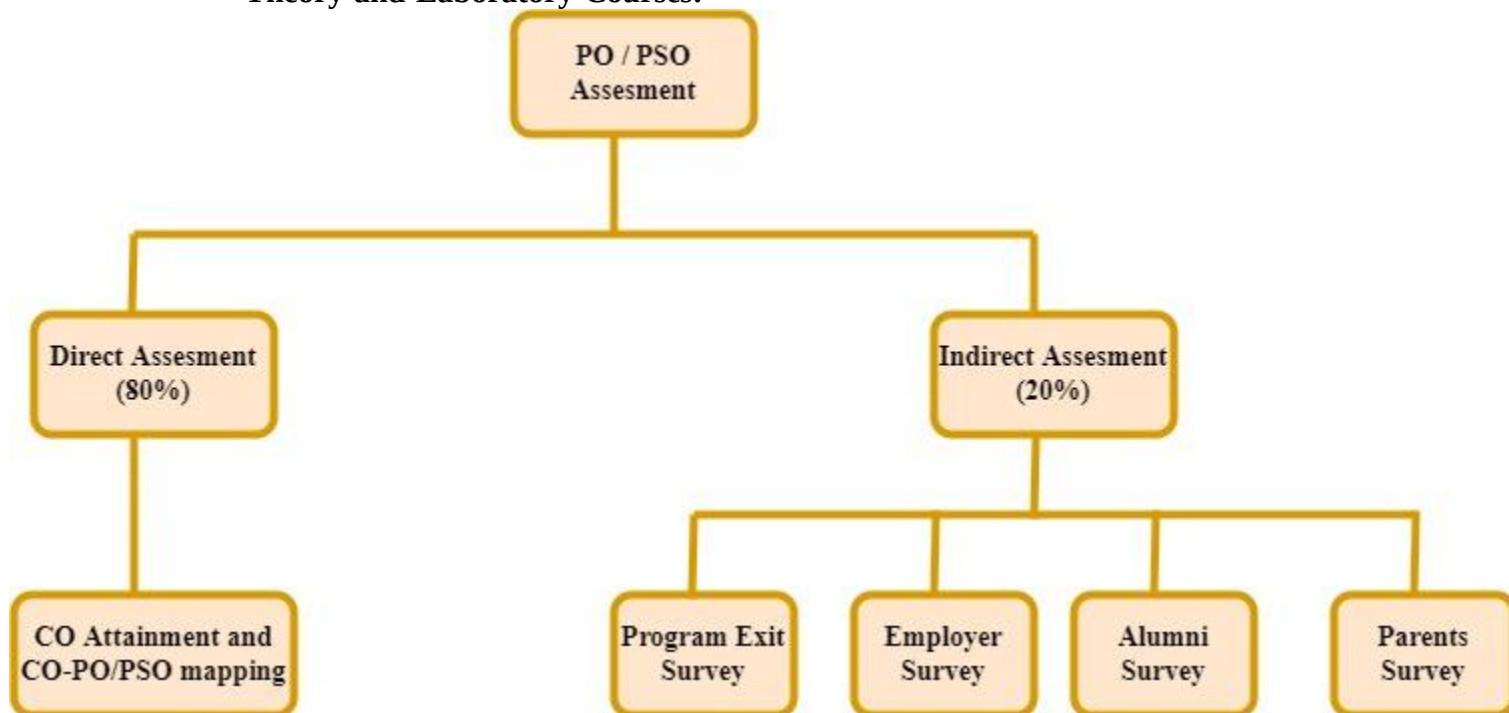


3.2 Attainment of Course Outcomes

Tools used in measuring CO:

- **Theory and Laboratory Courses:**



PO / PSO Assessment

Tools:

PO / PSO assessment is done by giving 80% weightage to direct assessment and 20% weightage to indirect assessment. Direct assessment is based on overall CO attainment and CO-PO/PSO mapping. Indirect assessment is done through program exit survey, alumni survey, parent survey and employer survey.

(i) Direct Assessment Tools and Process:

Direct CO Assessment tools are used for the direct assessment of POs and PSOs. The attainment of each PO corresponding to a particular course is determined from the attainment

values obtained for each course outcome related to that PO and the CO-PO mapping values. Similarly, the values of PSO attainment are also determined.

(ii) Indirect Assessment Tools and process:

Indirect assessment is done through program exit survey, alumni survey, parent survey and employer survey

CALCULATION OF CO ATTAINMENT

CO Attainment	Weightage	Weightage	Assessment Tools	Over all Weightage
Direct CO attainment		70%	End Term Examination	100%
	80%			
		30%	Mid Semester Examination (Best of Two) Tests [I & II], Class Assignments, Quiz, lab assignment, Viva-voce examination.	
Indirect CO attainment			Course End Survey	
	20%			

Theory Course Evaluation

Assessment Tool	Maximum Marks			Weightage
Assignments / Quizzes	10			10%
Mid Semester Tests - 1 (MST1)	20	Best of Two	20	20%
Mid Semester Tests 2	20			
(MST2)				
End Term Semester Examination	70			70%

Laboratory Course Evaluation

Component of evaluation	Internal / External	Marks	Weightage
Weekly Experiment evaluation	Internal	30	40%
Viva – Voce		10	
Lab experiment	External	20	60%
Viva by external expert		30	

Internal Assessment

Attainment Level 1: Students scoring less than 50% marks

Attainment Level 2: Students scoring marks between 50% to 65% .

Attainment Level 3: Students scoring greater than or equal to 65% marks.

End Term Examination Assessment

Attainment Level 1: Students scoring less than 50% marks

Attainment Level 2: Students scoring marks between 50% to 65% .

Attainment Level 3: Students scoring greater than or equal to 65% marks.

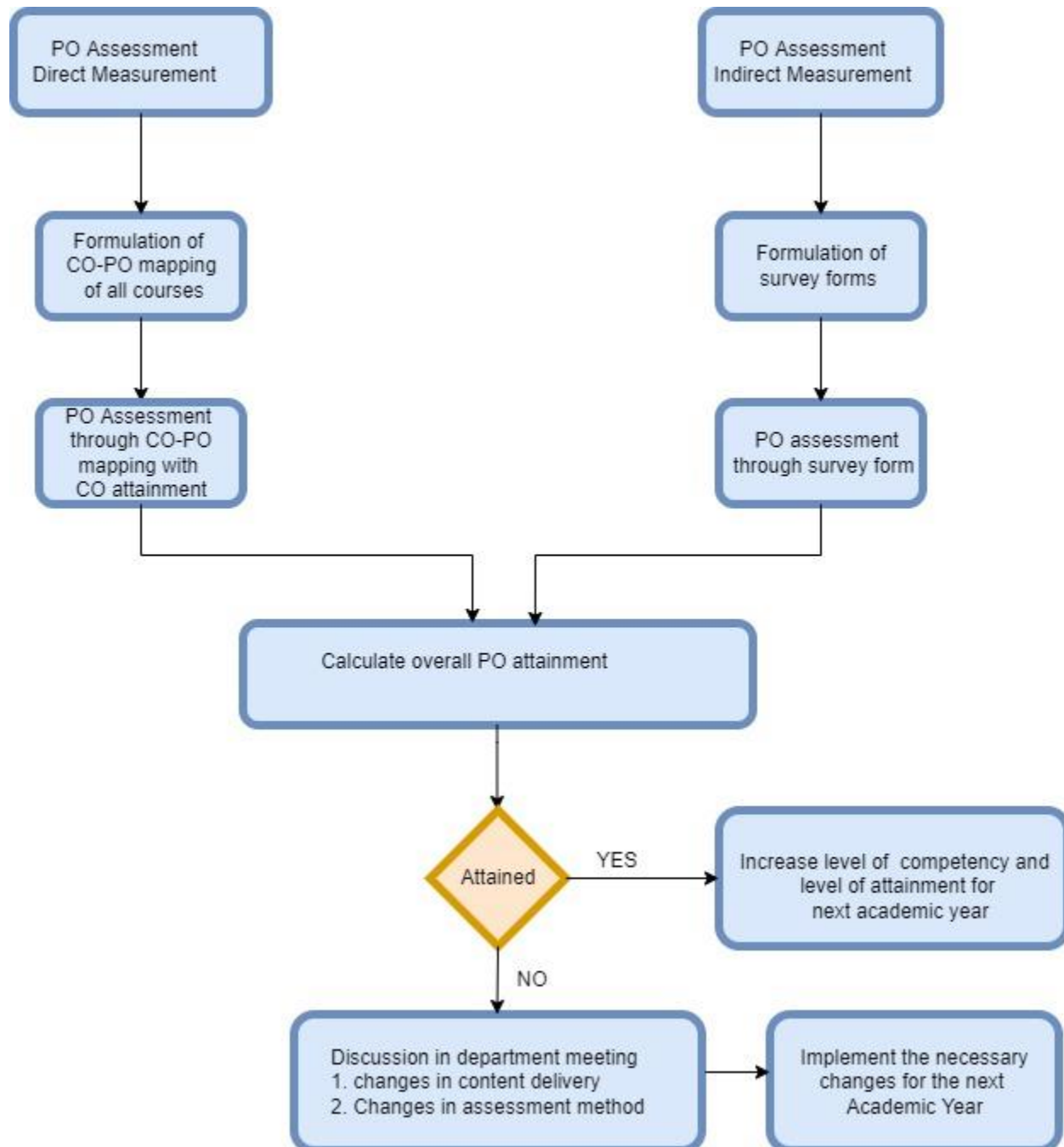
Target Attainment Calculation

Direct Attainment (DA) = External Assessment * 0.7 + Internal Assessment * 0.3

Indirect Attainment (IA) = Course Exit Survey

Total Attainment = DA * 0.8 + IA * 0.2

PO ASSESSMENT



PSO ASSESSMENT

